

Vol.17 No.1 | 2023

CRUD IN DESIGNING A STAFFING MANAGEMENT INFORMATION SYSTEM FOR TVRI WEST SUMATRA

Lika Jafnihirda*¹⁾, Giatman²⁾, Hasan Maksum³⁾, Firdaus⁴⁾

^{1,4} Universitas Putra Indonesia YPTK Padang

^{2,3} Universitas Negri Padang

*Corresponding Email: author jafnihirdalika@upiypk.ac.id

Submit :

21/08/2022

Accept :

02/02/2023

Publish :

28/02/2023

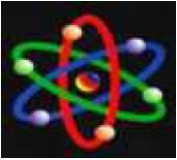


Abstract

The use of information technology can simplify and accelerate a business process and also the company's performance in managing information. Information processing will be faster if it is accessed on a web page. Therefore, researchers designed a web-based personnel management information system. This system was built using the PHP programming language and MySQL database by analyzing the use of CRUD (Create, Read, Update, Delete). This is done by inputting employee data more easily. With this staffing management information system, it can make it easier to manage employee data which is easy and fast to be immediately followed up by related parties. This personnel management information system also makes it easier for employees to do work and makes reporting more optimal and timely as needed.

Keywords: CRUD, PHP My SQL, Website, Information System, Employee.

© 2022 Lembaga Layanan Pendidikan Tinggi Wilayah X. This is an open access article under the CC Attribution 4.0 license (<https://creativecommons.org/licenses/by/4.0/>).



INTRODUCTION

The rapid development of technology today has an impact on almost all areas of life. Computers as a medium of information technology are increasingly popular in the community in various circles. In the world of business, offices and institutions, the influence and application of information technology are also very beneficial, computerization and information systems that are used have developed very rapidly and are more sophisticated, so do not be surprised if you use computers in today's life which has become widespread and popular in society [1]. Technological advances that are all sophisticated cause the proliferation of programming languages that can be used in making an employee management application.

Personnel management includes a system which is basically a group of elements that are closely related to one another, which function together to achieve certain goals [2]. In simple terms, a system can be interpreted as a collection or set of elements, components, or variables that are organized, interact with each other, depend on each other, and are integrated [2]. From this definition, the general meaning of the system can be further specified, namely: each system consists of elements, these elements are an integrated part of the system concerned, the elements of the system work together to achieve system goals, a system is part of another system. the greater one.

Even companies and government agencies including the West Sumatra Television Public Broadcasting Institute of the Republic of Indonesia (LPP TVRI SUMBAR) have used various

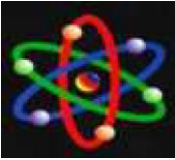
programming applications, one of which is Java. There are still some things that are not compatible with Java programming, apart from that the memory usage for Java-based programs is far greater than that of other programming languages. Therefore, LPP TVRI SUMBAR wants to do an employee application update that is easier to access. Due to the rapid development of technology lately, especially web-based applications, given the rapid development of the internet. So that the desired application program from LPP TVRI SUMBAR is a web-based staffing application with the PHP programming language.

Personal Home Page (PHP) is a server side script language, namely a language in the form of a script that is located and executed on the server and then the results (in the form of HTML code) are returned to the user's browser (client) [4]. PHP is a programming language designed to be easily inserted into HTML pages [5]. PHP is designed to form a web that is dynamic, which means that the page to be displayed is created when the page is requested by the client. For example, being able to access databases and display them on web pages quickly and easily. PHP can also interact with almost all existing web technologies and its open source (free to use) nature provides an opportunity for all users and programmers to use and develop it.

RESEARCH METHODS

Data collection is the most important stage in a research. At this stage the researcher explains how to collect information and what things to do to obtain that information. In this study there are several methods used to obtain





data/information including; observation and interview. Observations were made to find out how the input of employee data at TVRI West Sumatra has been carried out so far [9]. Meanwhile, interviews were conducted in order to find out, the needs of the user and what data will be entered into the system. [10].

This research was built using PHP My SQL. By analyzing the use of CRUD (*Create, Read, Update, Delete*) are the basic operations that must exist in a database on a system, both web and desktop based. Supported by using XAMPP which is a software from the Apache web server in which there is already a MySQL database server and PHP programming support.

RESULTS AND DISCUSSION

The implementation of web-based PHP My SQL programming is related to the personnel management system at TVRI West Sumatra, the first thing to do is to make a data preprocessing design and interface design. Data preprocessing design is useful for knowing what data is needed in the process of making the application to be worked on. While the design of the interface aims to be used as a bridge between the user and the application system created, so that the user can operate the information system created.

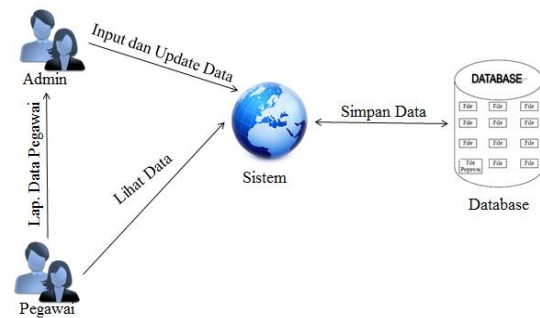


Figure 2. General Plan for Entering Employee Data

Entering employee data at LPP TVRI SUMBAR is designed as needed to manage data related to personal information and all employee data. In this information system there are 2 users, namely admin and employees. Where, admin users can input and update employee data while employee users can view data on the system. If employees want to update data, employees must report to the admin.

Describing the process of the new employee data input design, it will be explained through the employee data input information flow. The first is the process of managing employee data, where employee data is inputted by the admin.

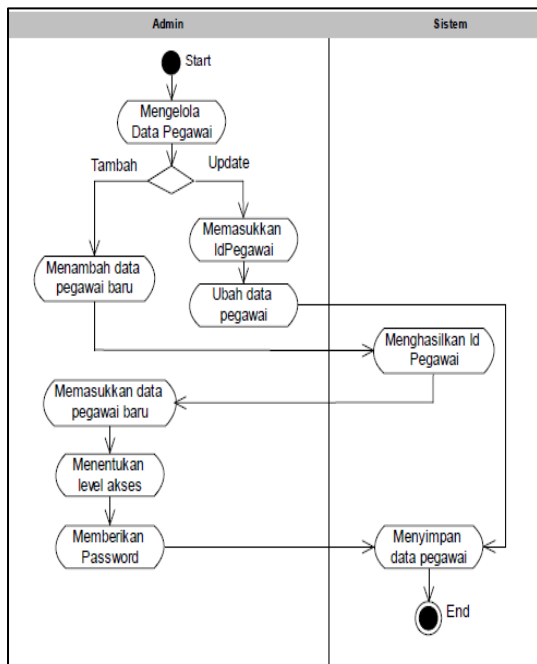
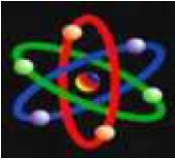


Figure 3. Information Flow for Managing Employee Data

Based on Figure 3, it explains that in the personnel management information system at TVRI West Sumatra the admin has access rights to manage employee data.

After designing the information flow for managing employee data, then the next step is to design the personnel management database. A database or database is a collection of data that is stored systematically on a computer and can be processed or manipulated using software (application programs) to generate information. Defining the database includes specifications in the form of data types, structures, and also the boundaries of the data to be stored. The database is a very important aspect in an information system where the database is a warehouse for storing data that will be processed further. The database is important because it can avoid data

duplication, unclear relationships between data, data organization, and complicated updates.

The design of the personnel management information system database at TVRI West Sumatra was made with employee names. This database contains 26 tables. Where, each table has each field. Here's the database:

Figure 4. Databases Employee of LPP TVRI SUMBAR

Based on Figure 4, from the staffing database design that has been made, CRUD analysis is then carried out to create, read, update, and delete data in a personnel management system, namely as follows;

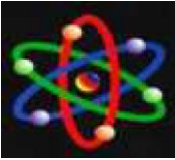
1. Create

Create is a process of creating or creating data where the create operation is often used when we create an application. Before you can CRUD data into the database, you must make a connection to the database first. Write coding using a text editor, in this create implementation coding is made using notepad++.

2. Read

Read is a process of reading / displaying data that we have created generally into a table. Usually after the





created application is executed, it will immediately refer to the read file. This time, the file for the read operation is saved with the file name `input_peg.php`. Saved in the `C:\xampp\htdocs\tvri` folder.

3. Updates

Update on PHP to edit staffing data that has been entered in a web browser, and can be changed back to data that has been stored in the LPP TVRI SUMBAR staffing database. The data that originally existed was changed as needed. In a program, a button is needed that functions to change the data. If an error occurs in the input process, we don't need to delete the data, just change it as needed. This PHP update file is stored in the same folder at `C:\xampp\htdocs\tvri SUMBAR` with the file name `edit_peg.php`.

4. Delete

Delete is a process of deleting records that we have specified from the table. The existence of this delete file is very, very vital because it functions to delete an error in data input which is generally due to human error. Here are the steps to make file delete.

The final result of writing the CRUD creation codes using PHP is a simple display of LPP TVRI SUMBAR employee data input. How to run all the PHP coding that has been made, that is, run XAMPP and enter the web browser, then type `http://localhost/pegawai` in the url . Then the following display will appear which is the result of PHP coding.

Figure 5. Input data display

With the display of employee data input above, LPP TVRI SUMBAR employees can easily input data, after the data is input it will be stored in the database automatically. So that the display appears as below, as a sign that the connection that has been made between PHP and the database has been connected.

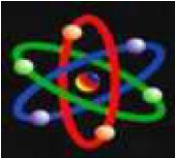
NIP	Nama	Tanggal Lahir	Jenis Kelamin	Alamat	Foto	Edit
0901229190101002	Indekman A. Ma, SH	29 Desember 1965	Laki-laki	R.Pasar IV No 1 Padang 25116-Indonesia		Edit Data

Figure 5. Data display that has been input

CONCLUSION

The use of the PHP programming language in making employee data input applications at LPP TVRI SUMBAR is an *open source* programming language so that it can be used in various operating systems and can be run at any time. With this staffing management information system, the input of LPP TVRI SUMBAR employee data can be used effectively and





efficiently, so skilled workers are needed in operating the applications that are made. In addition, the existence of this personnel management information system can make it easier to manage employee data easily and quickly, so that it can be directly followed up by related parties. This also makes it easier for employees to do their job and makes reporting more optimal and timely as needed.

BIBLIOGRAPHY

- [1] Prasetyo, R., & Wijayanti, E. (2022). DEVELOPMENT OF ACADEMIC CRUD WEBSITE AT SMP 3 BAE KUDUS. *Journal of Informatics Dialectics (Detika)*, 2(2), 67-71.
- [2] Mahfuz, MS, & Wasil, M. (2022). *Management information System*. Imprint CV (Imprint Publisher).
- [3] Sadikin, A., & Wiranda, N. (2022). *Management information System*.
- [4] Ni, NLPSA, & Widnyani, M. DESIGN OF DIGITAL-BASED PERSONNEL MANAGEMENT INFORMATION SYSTEMS FOR SMEs.
- [5] Fajar, MM, & Chotijah, U. (2022). Web-Based Archive Service Management Information System (Si Malak). *Journal of Informatics and Applied Electrical Engineering*, 10(3).
- [6] Fajar, MM, & Chotijah, U. (2022). Web-Based Archive Service Management Information System (Si Malak). *Journal of Informatics and Applied Electrical Engineering*, 10(3).
- [7] Rahmawati, I., Munawar, Z., Komalasari, R., & Putri, NI (2022). Personnel Management Information System at Nurtanio University. *SISFOTEK Proceedings*, 6(1), 10-20.
- [8] Widiyanto, D. (2022). Web-Based Inventory Management Information System Design (Case Study: SMA Ypt Purworejo). *JOURNAL OF ECONOMICS AND INFORMATICS ENGINEERING*, 10(1), 24-31.
- [9] Vohra, D. (2007). *CRUD on Rails* (pp. 71-106). Springer Berlin Heidelberg.
- [10] Saputra, AT (2022). Mobile-Based Probolinggo Regency Employee Income Supplementary Management Information System.
- [11] Irakli, BASHELEISHVILI, & Avtandili, BARDAVELIDZE (2021). Studying the Execution Time of Crud Operators in the Relational and Non-Relational Databases in the PHP and PYTHON Programming Languages. *Journal of Computer Science and Control Systems*, 14(2), 5-8.
- [12] Tamaza, MA, & Cahyono, AB (2021). Laravolt Implementation in Making CRUD in the Probolinggo City Bappeda Dashboard Application. *AUTOMATA*, 2(1).
- [13] Wahyuni, ES (2021). Analysis of How CRUD Works Using Android Studio.
- [14] Pamungkas, SY, & Wibowo, S. (2020). SALES INFORMATION SYSTEM USING WEBSITE-BASED CRUD IN CV. ETERNAL REVELATION IS USEFUL. In *Science and Engineering National Seminar* (Vol. 5, No. 1, pp. 843-851).
- [15] Vohra, D. (2007). *CRUD on Rails* (pp. 71-106). Springer Berlin Heidelberg.

