

DEVELOPMENT STRATEGY COVID-19 SCREENING AT MARDI WALUYO BLITAR HOSPITAL

RatnaWardani¹⁾, DevitaRiafinola²⁾, Novi Kurniasari³⁾
Amalia Nur⁴⁾, Tutus Fibri⁵⁾, AgusWahyudi⁶⁾

¹²³⁴⁵⁶Faculty of Public Health, Indonesian Strada Institute of Health Sciences,
Indonesia

E-mail: ratnawardani61278@gmail.com

Vol.16 No.1 | March, 2022

Submit :
02/08/2021

Accept :
24/03/2022

Publish :
31/03/2022



This work is licensed
under a Creative
Commons Attribution
4.0 International
License.

Abstract

WHO announced Covid-19 as pandemic on 11th March 2021. In order to prevent the spread of Covid-19, Mardi Waluyo Hospital has an application for online screening that can be accessed independently by patients. This application will make patients and health workers easier and accelerate the health services. The aim of community dedication program that held in RSUD Mardi Waluyo is develops an online covid-19 screening system and provides education so that both health workers and the community able to use application of online covid-19 screening to reduce direct contact between health workers and patients. At the initial stage, socialization was given to health workers starting from management, registration, program and staffing division, head of nursing, head of medical support, public relations, nurses, and medical records. To introduce the online screening application, socialization is carried out directly and through the media. An understanding of the online screening application is important because we can measure how successful the online screening implementation plan at Mardi Waluyo Hospital. Before socialization, understanding about online screening applications was 56.00, while after socialization was 91.00. It shows that there is an increase in participants' understanding after the socialization

Keywords: Covid-19, Online Screening, Socialization



INTRODUCTION

According to (WHO, 2020) the COVID-19 outbreak was declared a global pandemic on March 11. The number of cases in Indonesia as of October 9, 2020 was reported at 320,564 cases with a death rate of 11,580 cases (Vania et al., 2020). While the death rate in the world has exceeded millions of deaths. Coronavirus Disease 2019 (COVID-19) is a disease caused by the Severe Acute Respiratory Syndrome Coronavirus 2 (SARS-CoV-2) and has a higher rate of transmission and infectivity and a lower mortality rate than SARS-CoV-1 and MERS- CoV. Screening is identifying people who are at high risk for a disease. The purpose of screening is to find the disease early and provide early treatment so that it will reduce mortality and the severity of the disease (Muñoz-Olivas, 2004).

In an effort to reduce the number of Covid-19 spikes, hospitals must increase excellence in hospital services as an effort to prevent a spike in the number of Covid-19 cases. According to (WHO, 2020) there are early investigations protocols, one of which is the assessment of COVID-19 risk factors among health workers (HW) protocol. The protocol is carried out by collecting specimen data, especially in health care facilities with the aim of knowing the transmission route and preventing the spread of infection in health care facilities.

Various efforts have been made by RSUD Mardi WaluyoBlitar which aim to increase public awareness, one way is by online screening, this screening is a new application that has been tested, but has not yet been implemented for patients. The procedure for this screening is that patients

who come must be screened first using an android application and then verified by hospital officers before getting service, so it is hoped that screening or screening for Covid-19 before entering the hospital can be used as an important step in preventing transmission of diseases caused by viruses. this corona. In screening, honesty from the patient and family is needed in order to get valid results. Therefore, Mardi WaluyoBlitar Hospital needs to have a special strategy for implementing the right screening application in order to reduce the risk of Covid-19 transmission, especially in the Mardi WaluyoBlitar Hospital area. Based on the background of the problem, the purpose of this study is to determine the indicators which are the strengths, weaknesses, opportunities and threats in the application of online screening applications. In addition, it is also to find out the strategy implemented by Mardi Waluyo Hospital Blitar.

RESEARCH METHODS

This study is an integrated study in the field of ICT (Technology, Information and Communication). In one application service. The current application development stage is at the completion stage by adding an independent Covid-19 screening feature which is expected to reduce the risk of Covid-19 transmission. At an early stage socialization given to health workers starting from management, registration, program and staffing division, head of nursing, head of medical support, public relations, nurses, medical records to introduce online screening applications, socialization was carried out directly and through the media.





The method to determine the strategy to be taken uses the fishbone, USG and SWOT methods. Fishbone method used to find the root cause of an effect that occurs (Binus, 2017). USG method (Urgency, Seriousness, and Growth) to determine priority problems and is an important part in the problem solving process (RI KEPMENKES, 2016).

The assessment technique uses a score of 1-5 on a Likert scale. The result of the ultrasound matrix is to combine the values of the three comparison factors and sort according to the number. The largest as a result of priority (Kotler, 2000). The SWOT method is used to analyze the situation which includes the company's strategic factors (strengths, weaknesses, opportunities and threats) in the current conditions (Rangkuti, 2016). The USG method (Urgency, Seriousness, and Growth) is one method to determine problem priority.

RESULTS AND DISCUSSION

In order to prevent the spread of Covid-19, Mardi Waluyo Hospital has an online screening application that can be accessed independently by patients. The existence of this application will make it easier for patients and health workers and accelerate the course of health services.

The problem assessment by the Mardi Waluyo Hospital team using Fishbone analysis obtained the following results: (1) Method : Solutions for facilities and infrastructure for those who do not have Android, (2) Application:

There is no socialization to the public and hospital staff regarding the use of COVID-19 screening, (3) Materials: There are no leaflets and brochures within the hospital, and on the web there is no such thing, (4) Environment: There is no education to the public, (5) Man: All officers/trials from the hospital have not all tried the covid-19 screening link and have not been evaluated internally.

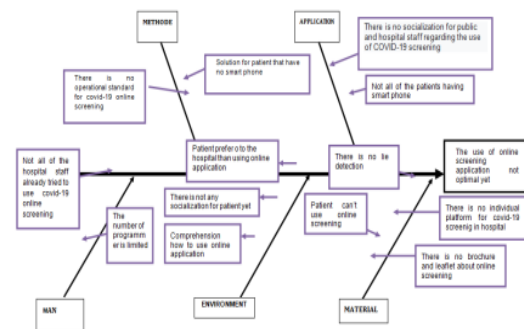
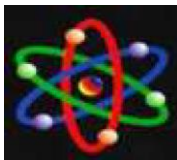


Figure 1. Fishbone Diagram Development Strategy Covid-19 screening

Based on the problems mentioned above, the next step is ultrasound analysis. From the results of the USG, it was found that the priority of the selected problem was the highest ranking value of the 5 factors that were not optimally used for the online Covid-19 Screening application. The following ultrasound analysis we did:

Priority Problem





No	Priority Problem	ultrasound			Total	Rank
		U	S	G		
1	There has been no socialization to the public and hospital staff regarding the use of COVID-19 screening	5	4	4	80	II
2	There is no Standard Operating Procedure (SOP) on how to use COVID-19 screening	3	4	5	60	I
3	There are no leaflets, and brochures within the scope of the hospital, and there is no web either	5	4	5	100	III
4	There is no public education	2	2	3	12	IV
5	The culture of the people prefers to come directly to the hospital	1	2	3	6	V

Figure 2. Prioritization Of Covid-19 Screening Issues

From the USG table above, we can see that the main problem with the not yet optimal use of the online COVID-19 Screening application is that there is no Standard Operating Procedure (SOP) on how to use COVID-19 screening.

Next, a SWOT analysis is carried out (Strength, Weakness, Opportunities, Threats), to determine strategies that can be applied in Mardi Waluyo Hospital. Based on the results of the SWOT analysis made, the strategy that can be used is an aggressive strategy (SO) including:

- (1) Implemented in all outpatient services,
- (2) Socialized to all parts of Mardi Waluyo Hospital ,
- (3) Providing rewards (discipline using covid-19 screening) for Hospital HR.

CONCLUSION

The innovation of the Covid-19 screening application is a solution from the Mardi Waluto Hospital to reduce the transmission rate from patients to all human resources and between patients and patients or patients' families at the hospital. So that the implementation of the Covid-19 screening optimization activity takes place continuously and evaluation of its implementation is carried out periodically

so that the optimal achievement of the use of Covid-19 screening can be carried out.

BIBLIOGRAPHY

- Faidy, A. B., & Arsana, I. M. (2014). Hubungan Pemberian Reward Dan Punishment Dengan Motivasi Belajar Pendidikan Kewarganegaraan Siswa Kelas XI SMA Negeri 1 Ambuntan Kabupaten Sumenep. *Kajian Moral Dan Kewarganegaraan*, 2, 454–468.
- Hastuti, N., Djanah, S. N., Pascasarjana, M., & Dahlan, U. A. (2020). Studi Tinjauan Pustaka : Penularan Dan Pencegahan Penyebaran Covid-19 Literature Review Study : Transmission and Prevention of the Spread of Covid-19. *7(2)*, 70–76.
- Jokusuyanto. (2010). Gender dan Sosialisasi. Jakarta: Nobel Edumedia
- Muñoz-Olivas, R. (2004). Screening analysis: An overview of methods applied to environmental, clinical and food analyses. *TrAC - Trends in Analytical Chemistry*, 23(3), 203–216. [https://doi.org/10.1016/S0165-9936\(04\)00318-8](https://doi.org/10.1016/S0165-9936(04)00318-8)
- Purwanto, A., Pramono, R., Asbari, M., Hyun, C. C., Wijayanti, L. M., Putri, R. S., & Santoso, P. B. (2020). Studi Eksploratif Dampak Pandemi COVID-19 Terhadap Proses Pembelajaran Online di Sekolah Dasar | *EduPsyCouns: Journal of Education, Psychology and Counseling. Journal of Education, Psychology and*





Counseling, 2(1), 1–12.

<https://ummaspul.e-journal.id/Edupsycouns/article/view/397>

Shekhar, S., &Xiong, H. (2008).Spatio-temporal Query.Encyclopedia of GIS, 1125–1125.

https://doi.org/10.1007/978-0-387-35973-1_1331

Sutaryo, Dasar-DasarSosisialisasi, (Jakarta: Rajawali Press, 2004), hlm. 230

Vania, A., Yuliani, D., &Sumada, I. K. (2020).ManifestasiKlinisNeurologisPada Covid-19. Callosum Neurology, 3(3), 88–95.

<https://doi.org/10.29342/cnj.v3i3.118>

Amalia, A. (2016). PERENCANAAN STRATEGI PEMASARAN DENGAN PENDEKATAN TUBBY.JurnalManajemen Dan Start-Up Bisnis, 1(3), 10.<https://journal.uc.ac.id/index.php/performa/article/view/172/158>

